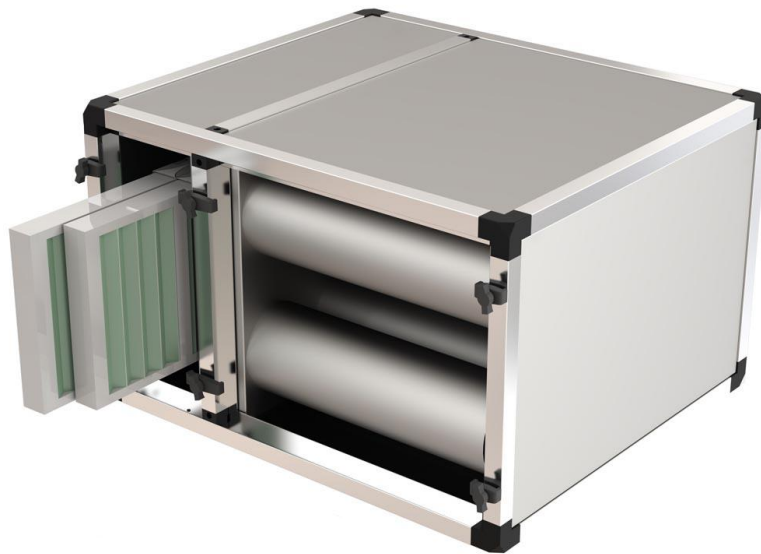




**AIR CLEANER MODEL
FBK-1500/7223.0515**





Carbon filter cabinet consisting of 2 parts:

1. Carbon cartridge holder: For de-odoring polluted air.
2. Cassette filter holder: For filtering dust particles in polluted air.

The Odor / carbon filter cabinet is manufactured in accordance with CE guidelines and is equipped with an inspection hatch so that it is easy to clean.

Product number:	FBK-1500/7223.0515
Number of Carbon cartridges:	08 pieces
Carbon cartridges dimensions in mm:	(Ø)145 (L)400
Flow Rate Carbon filter:	150m3/h
Resistance Carbon filters in Pa:	90(Pa)
Number of Cassette filters:	2 piece
2x Cassette filters dimensions in mm:	(W)592x(D)45x(H)289
Flow Cassette filters (592x595):	1700 m3/h
Resistance Cassette filter in Pa:	250 (Pa)
Profile frame:	Aluminium
Panel construction:	Galvanised steel



Cdestruction Panel filters are pleated filters that are assembled in a moisture-resistant cardboard frame. The synthetic filter medium is progressively constructed, which guarantees high dust capture yields. This technique guarantees lower air resistance, which leads to lower energy consumption.

Advantages cassettefilters: Advantages general:

- Large filter surface
- Fully combustible
- High dust absorption capacity
- Long stand time
- Low energy consumption
- Dimensions in accordance with EN15805
- Moisture-resistant cardboard frame
- Easy assembly
- Fully combustible

Technical specifications

:Application:	Pre-filter HVAC, industry, spray booths
Frame:	Very sturdy cardboard frame
Type filter:	G4 Bonding:
N/A.Medium:	Synthetic
Gasket:	Optional neoprene
Filter class:	According to ISO 16890: ISO Coarse
Maximum final resistance:	250 Pa
Flow Cassette filter in m3/h:	3400m3/h
Maximum temperature:	70°C
Maximum relative Humidity:	90%

Installation instructions:

- Make sure the filter is installed correctly: suction side- clean airside
- Filter must be mounted correctly: no leaks
- Gaskets must be undamaged
- Filter must be clamped in four places
- Prevent double sitting of the filter medium
- Prevent damage to the filter during installation
- The system must turn on for several hours to obtain the desired result
- Installation registration of the filters: note date, type, starting resistance.



For filtering odors or harmful gases

Application

CFC filter cartridges have many applications.

The goal is always to rid the air in and / or away of annoying odors or harmful gases.

Some examples where our carbon filter cartridges are successfully applied:

airports, clean rooms, hospitals, data centers, industrial kitchens, museums, archives and offices.

In industry, it is often about getting rid of the exhaust air of harmful gases.

Advantages of carbon filters:

- Refillable
- High absorption capacity • Easy assembly

Technical specifications:

Application:	Horeca
Frame:	Galvanized steel, plastic and stainless steel 304
Bonding:	N.V.T.
Activated carbon:	Coal based activated carbon (pellets) M-CARB generic activated carbon
Gasket:	Neoprene
Pressure (max):	90(Pa)
Flow rate:	150 m3/h
Maximal final resistance:	N/A
Maximum temperature:	50°C
Maximum relative humidity:	70%



Dimensions in MM (WxDxH):

